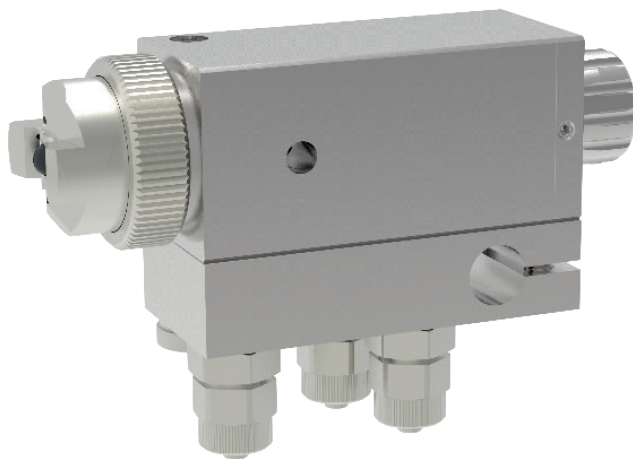


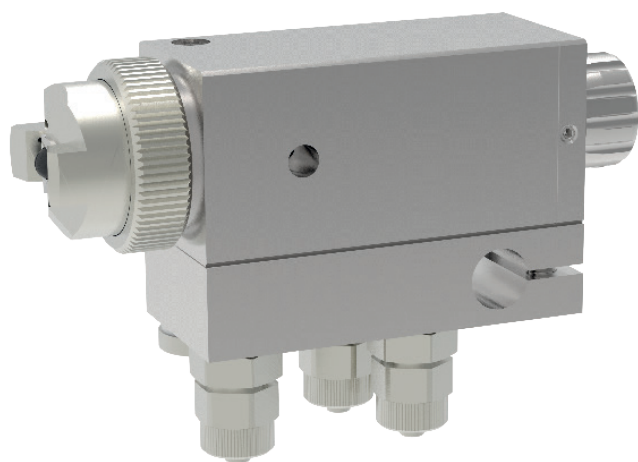
**Automatic-spray valve  
AHDM - HD-Mix**



**schütze**  
SPRAYTECHNOLOGY



# Automatic-spray valve AHDM - HD-Mix



The automatic-spray valves of series AHDM - HD-Mix combine the advantages of airless-technique with the advantages of conventional air atomized technique.

With a material pressure of max. 50 bar the fluid will be pressed and atomized through the MIX-core of spray valve. By the additional atomizing air (up to max. 6 bar) the fluid jet will be controlled and additional atomized very fine. Depends on atomizing air pressure the spray jet can be positioned for individual requirements. Finally a very fine and at the same time reduced spray will be reached.

Connection of valve is done via adapter plate. All necessary connections for atomizing air, control air and material are integrated in this plate. Optional also material circulation is possible. Mix-cores are available in different sizes. They are not included in standard delivery.

## Technical data:

<b>Material pressure:</b>	max. 50 bar
<b>Atomizing air pressure:</b>	0.5 - 6 bar
<b>Control air pressure:</b>	6 bar
<b>Measurements:</b>	100 x 65 x 30 mm
<b>Weight:</b>	approx. 725 g
<b>Air connection:</b>	applicable for hose 6/4
<b>Material connection:</b>	applicable for hose 6/4
<b>Needle seat:</b>	0.8 mm

Special designs on request.  
Technical alterations reserved.  
For further information please contact us.