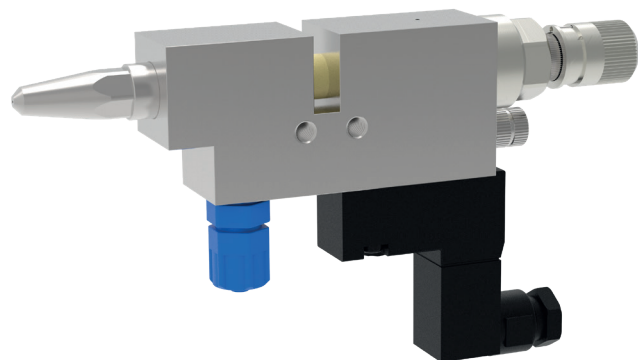
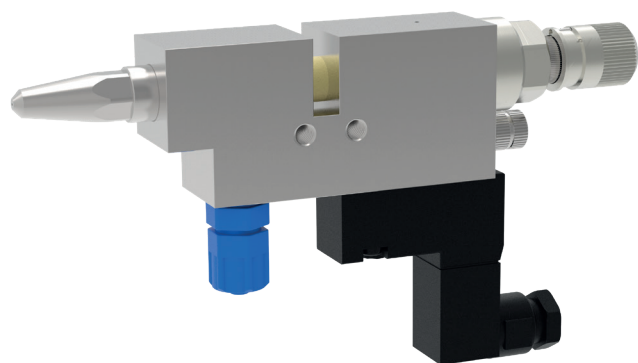


**Extrusion valve
MKDD LV/KV/VD**



schütze
SPRAYTECHNOLOGY





The extrusion valves of series MKDD are available in different variations. The valve can be equipped with a short nozzle (KV), a long nozzle (LV) or with different adapter nozzles (VD) for special applications.

The extrusion valves of series MKDD are suitable for the application of glues, adhesives, oils and sealing compounds. Depending on nozzle dimension, fluids of different viscosities can be applied.

Control of the valve is to be done via the directly mounted 3/2 way solenoid valve. The extreme short control air distance gives this valve very fast and exact needle intermission cycles.

- available nozzle dimensions:
ø 0.2 / 0.3 / 0.4 / 0.5 / 0.6 / 0.7 / 0.8 / 1.0 / 1.2 / 1.5 / 2.0 / 2.5 mm
- with ratchet regulator for easy adjusting amount of fluid.
- regulation of fluid outlet optional with counter nut adjustment
- solenoid valves with different voltages
(24 V/DC / 110 V/AC / 230 V/AC)
- optional with proximity switch (MKD - LV/KV/VD)

Technical data:

Material pressure:	max. 100 bar
Control air pressure:	min. 6 bar
Cycles:	up to 30 cycles per second
Measurements:	141 x 81 x 22 mm (incl. solenoid valve)
Nozzle:	stainless steel
Needle:	tungsten carbide
Gaskets:	Viton® (other materials on request)

Special designs on request.
Technical alterations reserved.
For further information please contact us.