

## SPRAY VALVE ESV-2-IS



**schütze**  
SPRAYTECHNOLOGY



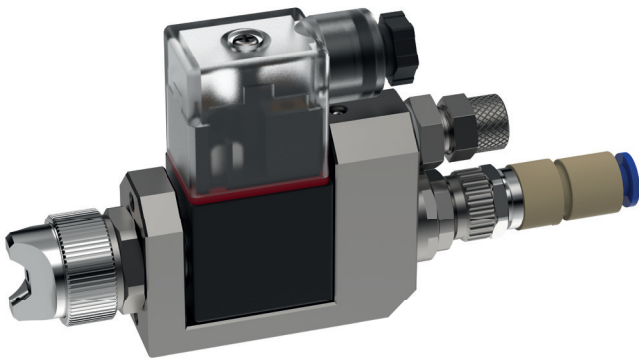


The ESV-2-IS spray valve is an electronically controlled applicator for the processing of materials such as sealants, adhesives, greases, paints, oils and many other media. The spraying process can be carried out as either an intermittent or continuous process.

The device is controlled using a solenoid coil. The valve opens when the solenoid coil receives a signal. When the solenoid coil no longer receives the signal, the valve closes again and thus interrupts the spraying of material.

The function of the needle is: to open in response to electro-magnetism and to close in response to spring pressure.

- available nozzle sizes:  $\varnothing$ 0.2 / 0.3 / 0.4 / 0.5 / 0.8 mm
- Ratchet regulation for easy setting of the material flow
- also available as full jet version (EVV-2)
- various nozzles and air caps for individual adjustment of the spray pattern



## Technical data:

<b>Dimensions:</b>	approx. 134 x 66,5 x 23,5 mm
<b>Weight:</b>	approx. 430 g
<b>Voltage:</b>	depending on coil 6 V / 12 V / 24 V
<b>Material pressure:</b>	max. 3 bar
<b>Atomizing air pressure:</b>	0,5 - 5 bar
<b>Cycles:</b>	max. 200 Hz

Special designs on request.  
 Technical alterations reserved.  
 For further information please contact us.