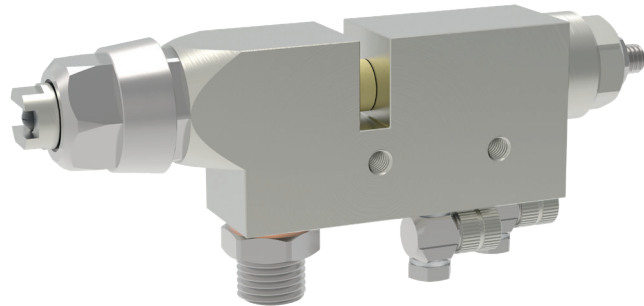


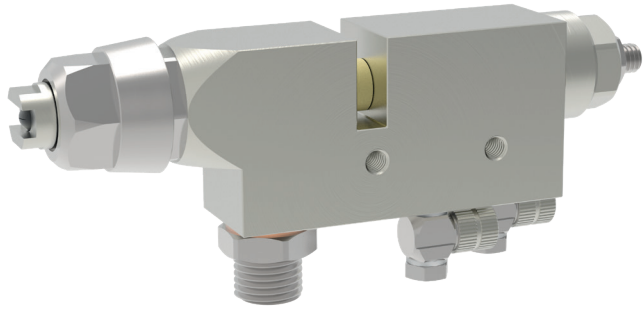
AIRLESS
automatic-spray valve S 830



schütze
SPRAYTECHNOLOGY



AIRLESS automatic-spray valve S 830



The automatic-spray valve S 830 is an airless spray valve. All connections are mounted on the under-side of valve. The control of valve is reached through two separate air connections. One for the opening of needle and one for the closing of needle. This has to be done via external pneumatic valves.

Needle and seat are made from tungsten carbide. For this reason also difficult fluids can be sprayed without problems.

The automatic-spray valve S 830 is designed for material pressures up to 250 bar. The self re-adjusted special gaskets are made from a compound, which is resistant against most fluids.

All standard AIRLESS-nozzles can be fitted to the S 830.

Technical data:

Material pressure:	max. 250 bar
Control air pressure:	min. 6 bar
Measurements:	120 x 50 x 22 mm
Weight:	approx. 580 g
Valve body:	brass, chemically nickel plated
Needle seat:	tungsten carbide
Needle:	tungsten carbide
Gaskets:	Viton® and PTFE (other materials on request)

Special designs on request.
Technical alterations reserved.
For further information please contact us.