

Spray valve ASV



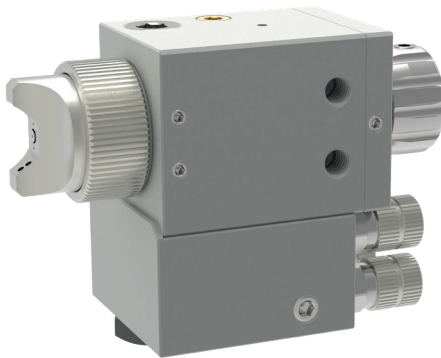
schütze
SPRAYTECHNOLOGY



Spray valve ASV



ASV



ASV
with quick release adapter

The spray valves of series ASV are pneumatically controlled spray valves. They are suitable for spraying release agents, oils, colours and in version KLS also for glues and adhesives.

The control of valve is done via external solenoid valves or mechanical valves. The supply of fluid is done via pressure tanks or pumps.

Technical data:

Material pressure:	max. 10 bar
Control air pressure:	3,5 - 6 bar
Atomizing air pressure:	as required
Measurements:	approx. 50 x 40 x 72,5 mm
Weight:	approx. 305 g
Valve body:	stainless steel
Nozzle + needle	stainless steel

These spray valves can be used for continuous or intermitted employments. A special of the ASV is the separate regulation of atomizing air for the cone holes. In this way the spray angle can be regulated as needed from round spray to approx. 90°-flatspray without changing the air cap. Optionally the regulation of atomizing air for the cone holes can be done via second air connection remote-controlled. The material connection with thread 1/8" achieves a high fluid flow. For fluid circulation an additional thread 1/8" offers this alternative. If needed, this thread can be equipped with an additional hose connection for circulation.

Another special of the ASV is an outlet in the fluid channel which allows fluid exit in case of leakage effected by wear or defect of needle gasket. This avoids fluid flow into the air channel and inevitable soiling.

The special of sprayvalve ASV with quick release adapter is the possibility to change the spray valve ASV within seconds without disconnecting or dismantling the hoses for air and fluid. Interruptions of work are reduced to a minimum. The quick release adapter should be connected with the machine/robot. Only by release of one screw the complete spray valve can be removed. The supply of air and fluid must be close off.

- available nozzle dimensions:
ø 0.2 / 0.3 / 0.5 / 0.8 / 1.0 / 1.2 / 1.5 / 2.0 / 2.5 mm
- continuously adjustable regulation of spray jet from round- to flat spray
- optionally remote-controlled regulation of spray jet from round- to flat spray
- with ratchet regulator for easy adjusting amount of fluid.

Special designs on request.
Technical alterations reserved.
For further information please contact us.