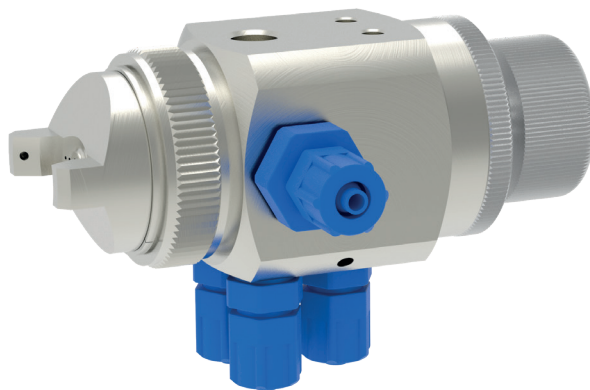


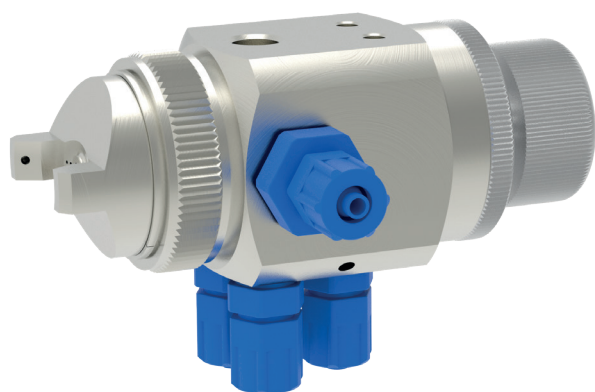
**Spray valve  
GF/4 and GF/4 HVLP**



**schütze**  
SPRAYTECHNOLOGY



# Spray valve GF/4 and GF/4 HVLP



The spray valves of series GF/4 and GF/4 HVLP are pneumatically controlled spray valves. They are suitable for spraying colours, paints, release agents, oils, glues, adhesives and other fluids. Depending on viscosity of fluid different nozzle dimensions are available.

The supply of fluid will be done via pressure tanks or pumps. These spray valves can be used for continuous or intermitted employments. A special of the GF/4 is the separate regulation of atomizing air for the cone holes and the middle hole via separate air connections (remote-controlled by external air pressure regulators). In this way the spray angle can be regulated as needed from round spray to approx. 90°-flatspray without changing the air cap.

Also available in HVLP-version (= GF/4 HVLP).

- available nozzle dimensions:  
ø 0.2 / 0.3 / 0.5 / 0.8 / 1.0 / 1.2 / 1.4 / 1.5 / 1.7 / 2.0 / 2.5 / 3.0 / 3.5 mm
- with ratchet regulator for easy adjusting amount of fluid (optional with lockscrew)
- with clamp for easy adjustment (ø 12mm)
- continuously adjustable regulation of spray jet from round- to flat spray by external air pressure regulators
- additional material connection available (Option)
- also available in stainless steel (AISI 316 L)

## Technical data:

<b>Material pressure:</b>	max. 10 bar
<b>Control air pressure:</b>	3 - 6 bar
<b>Atomizing air pressure:</b>	as required
<b>Measurements:</b>	100 x 63 x 62 mm (incl. connections)
<b>Weight:</b>	approx. 400 g
<b>Valve body:</b>	aluminium, chemically nickel plated
<b>Nozzle + needle:</b>	stainless steel

Special designs on request.  
Technical alterations reserved.  
For further information please contact us.