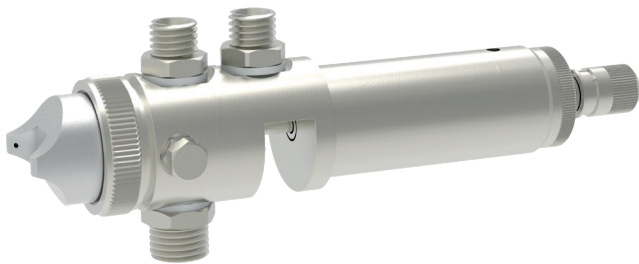


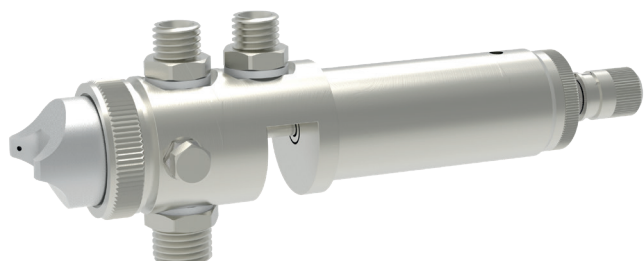
**Spray valve
GF/1 + GF/2**



schütze
SPRAYTECHNOLOGY



Spray valve GF/1 + GF/2



The spray valves GF/1 + GF/2 are robust spray apparatuses for the application of colours and paints. Also they are suitable for spraying release agents and glues.

The spray angle of these valves can be regulated as required via the regulating screw on side of valve. For larger surfaces special air caps (industry air cap) are available.

Clamp for mounting these spray valves in machines are available optionally.

- Available nozzle dimensions:
ø 0.3 / 0.5 / 0.8 / 1.0 / 1.2 / 1.5 / 1.8 / 2.0 / 2.5 / 3.0 / 3.5 mm
- Ratchet regulator for easy adjusting amount of fluid
- Different air caps for individual spray requirements
- Spray valve with one air connection
(control air, atomizing air) = GF/1
- Spray valve with two air connections
(control air separated from atomizing air) = GF/2

Technical data:

Material pressure:	max. 4 bar
Control air pressure:	min. 5 bar
Atomizing air pressure:	as required, (GF/1= control air pressure)
Measurements:	ø 38 mm x 91 mm (without connections)
Weight:	approx. 900 g
Valve body:	brass, chemically nickel plated
Nozzle + needle:	stainless steel
Gaskets:	Viton® (other materials on request)

Special designs on request.
Technical alterations reserved.
For further information please contact us.