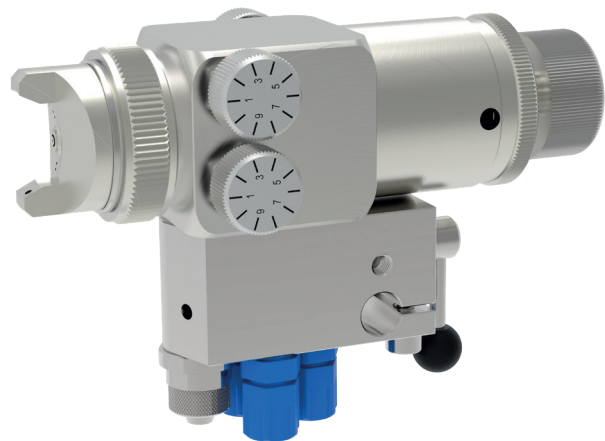
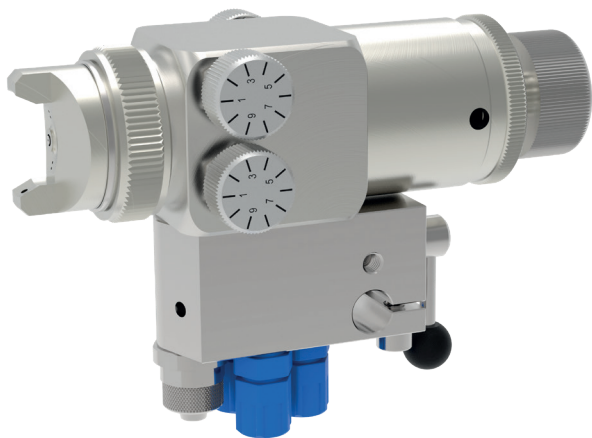


**GF/3**  
with quick release adapter



**schütze**  
SPRAYTECHNOLOGY





- available nozzle dimensions:  
 $\varnothing$  0.2 / 0.3 / 0.5 / 0.8 / 1.0 / 1.2 / 1.4 / 1.5 / 1.7 / 2.0 / 2.5 / 3.0 / 3.5 mm
- with ratchet regulator for easy adjusting amount of fluid
- with quick release adapter
- integrated atomizing air valve
- continuously adjustable regulation of spray jet from round- to flat spray
- also available in stainless steel (AISI 303 and AISI 316 L)

## Technical data:

<b>Material pressure</b>	max. 15 bar
<b>Control air pressure</b>	min. 3.5 bar
<b>Atomizing air pressure</b>	as required
<b>Measurements</b>	130 x 67 x 93 mm (incl. connections)
<b>Weight</b>	approx. 1040g
<b>Valve body</b>	aluminium, chemically nickel plated
<b>Nozzle + needle</b>	stainless steel

Special designs on request.  
 Technical alterations reserved.  
 For further information please contact us.

The spray valves of series GF/3 SW are designed for the application of paints, colours, release agents, oils, glues, adhesives and other fluids. Fluids of different viscosities can be applied with available different nozzle dimensions.

These spray valves can be used for continuous or intermittent spray application. Specials of this valve are the integrated atomizing air valve, which allows an independent regulation of purging air time (for cleaning the nozzle and needle point) and the separate regulation of atomizing air, individual for the cone holes and middle hole. In this way the spray angle can be regulated as needed without changing the air cap.

Another special of the series GF/3 SW is the possibility to change the spray valve within seconds without disconnecting or dismantling the hoses for air and fluid. Interruptions of work are reduced to a minimum.

The quick release adapter should be connected with the machine/robot. Only by turning a release handle the complete spray valve can be removed. The material supply is automatically stopped.

Alternatively, a quick release plate can be used instead. In this case, the supply lines must be shut off manually and the spray valve is fastened by a screw instead of via a release handle.

In version GF/3 HVLP also available with less overspray.