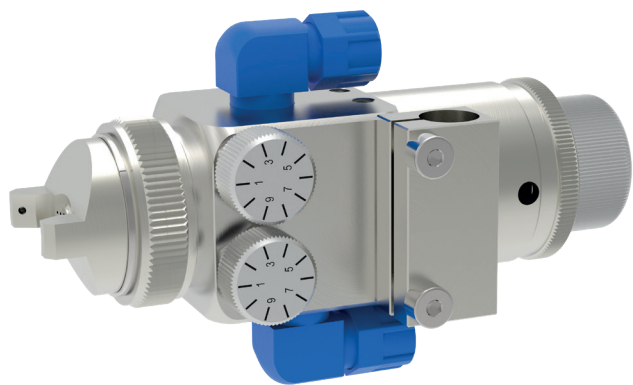


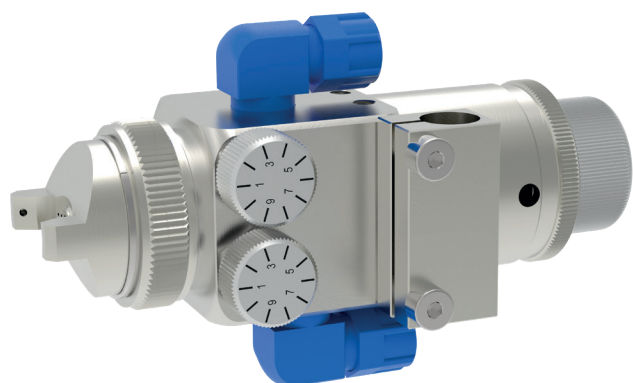
Spray valve GF/3 and GF/3 HVLP



schütze
SPRAYTECHNOLOGY



Spray valve GF/3 and GF/3 HVLP



The spray valves of series GF / 3 are designed for the application of paints, colours, release agents, oils, glues, adhesives and other fluids. Fluids of different viscosities can be applied with available different nozzle dimensions.

These spray valves can be used for continuous or intermitted employments. Specials of this valve are the integrated atomizing air valve, which allows an independent regulation of purging air time (for cleaning the nozzle and needle point) and the separate regulation of atomizing air, individual for the cone holes and middle hole. In this way the spray angle can be regulated as needed without changing the air cap.

In version GF / 3 HVLP also available with less overspray.

- available nozzle dimensions:
ø 0.2 / 0.3 / 0.5 / 0.8 / 1.0 / 1.2 / 1.4 / 1.5 / 1.7 / 2.0 / 2.5 / 3.0 / 3.5 mm
- with ratchet regulator for easy adjusting amount of fluid.
- with mounting clamp
- integrated atomizing air valve
- continuously adjustable regulation of spray jet from round- to flat spray
- also available in stainless steel (AISI 303 and AISI 316 L)

Technical data:

Material pressure:	max. 15 bar
Control air pressure:	min. 3.5 bar
Atomizing air pressure:	as required
Measurements:	130 x 81 x 72 mm (incl. connections)
Weight:	approx. 685 g
Valve body:	aluminium, chemically nickel plated
Nozzle + needle:	stainless steel

Special designs on request.
Technical alterations reserved.
For further information please contact us.