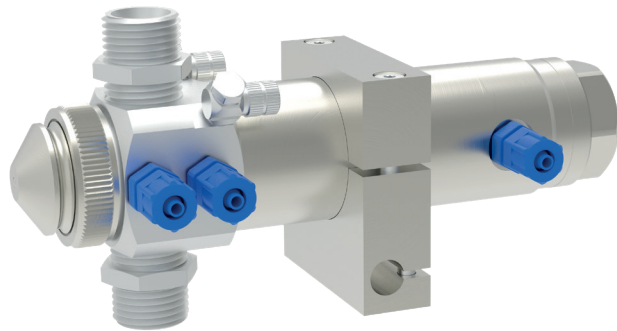
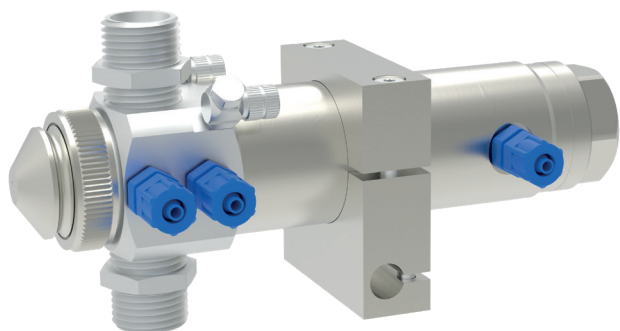


GF/6 spray valve



schütze
SPRAYTECHNOLOGY





The GF/6 automatic spray valve is a spray valve which has been specially developed for the application of abrasive media, e.g. mixtures of abrasive grain or graphite.

The spraying process can be carried out as either an intermittent or continuous process. Depending on which air cap is used, the output may be flat or round.

The GF/6 has a special feature of dual ports for flushing medium (e.g. oil). When in use, they prevent the material from entering into the sealing bush. The valve also has two material ports which allow operation with material circulation.

The function of the needle is:

Opening in response to air pressure / closing with air pressure (and additional spring pressure).

- Available nozzle sizes:
ø 0.2 mm / 0.3 mm / 0.5 mm / 0.8 mm / 1.0 mm / 1.2 mm / 1.5 mm / 2.0 mm / 2.5 mm
- With clamp mount for installation on crosshead (ø 10 mm)

Technical data:

Dimensions (round spray pattern air cap): 40 x 85 x 174.5 mm (without clamp/ports)

Weight: 1650 g

Control air pressure: 5 - 6 bar

Atomising air pressure: Depends on the desired application pattern

Material pressure: max. 6 bar

Special designs on request.
Technical alterations reserved.
For further information please contact us.