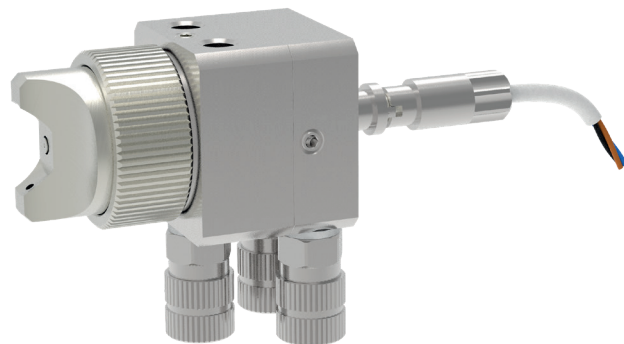


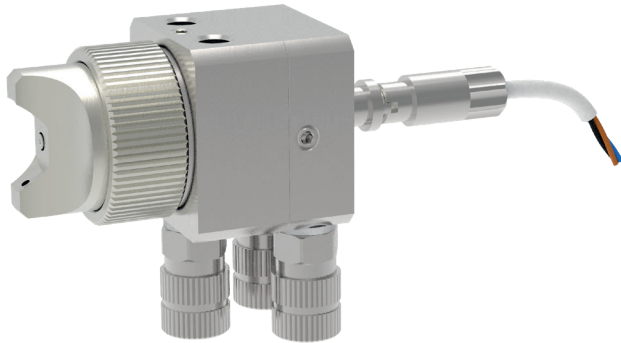
Automatic-spray valve KA-2 with inductive proximity switch



schütze
SPRAYTECHNOLOGY



Automatic-spray valve KA-2 with inductive proximity switch



The SCHÜTZE automatic-spray valves of series KA-2 are pneumatically controlled sprayvalves. Because of their low weight and the small measurements they are ideal for all spray jobs in machines or robots. The KA-2 can be used for all thin fluids, f.i. release agents or oils.

In addition to the basic version this KA-2 is equipped with an inductive proximity switch to scan the movements of needle (opening and closing).

- available nozzle dimensions:
ø 0.2 / 0.3 / 0.5 / 0.8 / 1.0 / 1.2 / 1.5 mm
- fluid flow can be regulated with ratchet regulating screw
- aircaps for different spray angles available
- optional with clamp

Technical data:

Material pressure:	max. 3 bar
Control air pressure:	3 – 6 bar
Atomizing air pressure:	0.5 – 6 bar
Measurements:	69 x 25 x 25 mm (flatspray aircap) 66 x 25 x 25 mm (roundspray aircap)
Weight:	approx. 150 g (with clamp 200 g)
Gun body:	stainless steel
Nozzle and needle:	stainless steel
Gaskets:	Viton® (other materials on request)

Special designs on request.
Technical alterations reserved.
For further information please contact us.