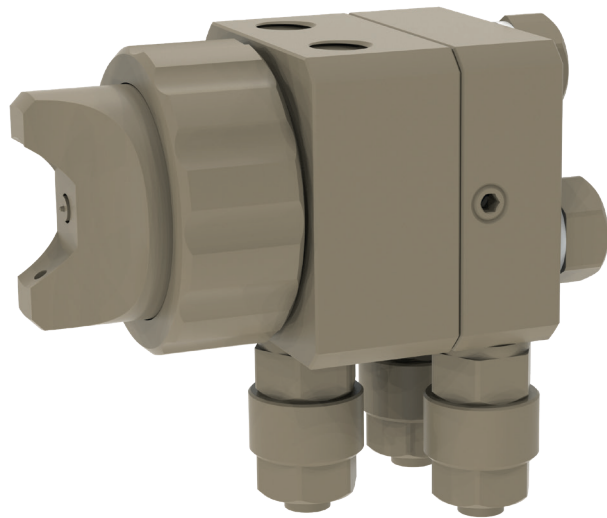


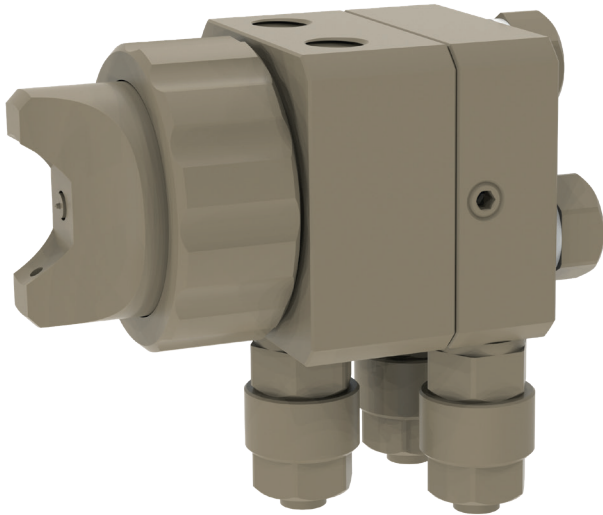
**Automatic-spray valve  
KA-2 PEEK**



**schütze**  
SPRAYTECHNOLOGY



# Automatic-spray valve KA-2 PEEK



The automatic spray valve KA-2, made from PEEK, has a weight of only 25 gram! Therefore and because of the small measurements it is ideal for all spray jobs in machines or robots. This spray valve can be used for all thin fluids, f.i. release agents, oils or colours. Also fluids, which may react with metallic materials, could be sprayed with this valve made from PEEK. Depending on air cap this spray valve sprays in flat or round spray. Depending on viscosity of fluid, the application can be adjusted individually via nozzle dimension, atomizing air pressure and material pressure.

- available nozzle dimensions:  
Ø 0.2 / 0.3 / 0.5 / 0.8 / 1.0 / 1.2 / 1.5 mm
- connections for control air-, atomizing air- and fluid hose either on upper or rear side
- fluid flow can be regulated with regulating screw
- air caps for different spray angles available

## Technical data:

<b>Material pressure:</b>	max. 3 bar
<b>Control air pressure:</b>	3 - 6 bar
<b>Atomizing air pressure:</b>	0,5 – 6 bar
<b>Measurements:</b>	42 x 25 x 25 mm (flat spray) 39 x 25 x 25 mm (round spray)
<b>Weight:</b>	25 g
<b>Valve body:</b>	PEEK
<b>Nozzle + needle:</b>	PEEK

Special designs on request.  
Technical alterations reserved.  
For further information please contact us.