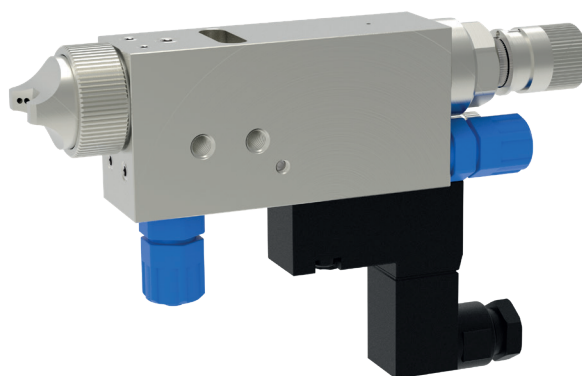


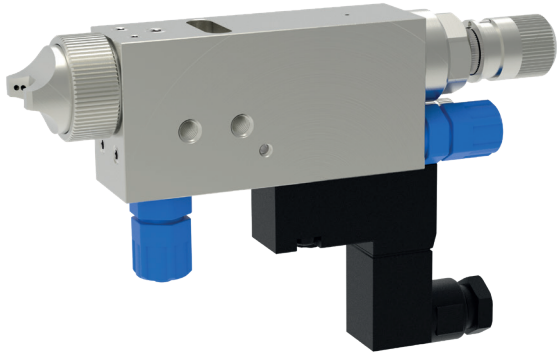
## Spray valve MKD-IS R/F



**schütze**  
SPRAYTECHNOLOGY



# Spray valve MKD-IS R/F



The spray valves of series MKD-IS R/F are electropneumatically controlled spray valves. They are suitable for spraying release agents, oils, colours and in version KLS also for glues and adhesives. The control of valve is done via the direct mounted solenoid valve. The supply of fluid is done via pressure tanks or pumps.

These spray valves can be used for continuous or intermitted application.

A special of the MKD-IS R/F is the separate regulation of atomizing air for the middle hole and the cone holes. In this way the spray angle can be regulated as needed from round spray to approx. 90°-flatspray without changing the air cap.

Another special of this valve is the integrated atomizing air valve for control of pre- and purging air.

An additional thread M5 offers the alternative for fluid circulation. If needed, this thread can be equipped with an additional hose connection for circulation.

In version MKD-IS R/F – HVLP also available with less overspray.

- available nozzle dimensions:  
ø 0.2 / 0.3 / 0.5 / 0.8 / 1.0 / 1.2 / 1.5 / 2.0 / 2.5 mm
- with ratched regulator for easy adjusting amount of fluid
- continuously adjustable regulation of sprayjet from round to flat spray
- integrated atomizing air valve for control of pre- and purging air
- optional with anti-stick nozzles and air caps
- different nozzles and air caps for individual application requirements

## Technical data:

<b>Material pressure:</b>	max. 15 bar
<b>Control air pressure:</b>	5 – 6 bar
<b>Atomizing air pressure:</b>	0.5 – 5 bar
<b>Cycles:</b>	up to 30 cycles per second
<b>Measurements:</b>	115 x 80 x 22 mm (incl. solenoid valve)
<b>Weight:</b>	approx. 530 g
<b>Valve body:</b>	brass, chemically nickel plated
<b>Nozzle + needle:</b>	stainless steel
<b>Gaskets:</b>	Viton® (other materials on request)

Special designs on request.  
Technical alterations reserved.  
For further information please contact us.