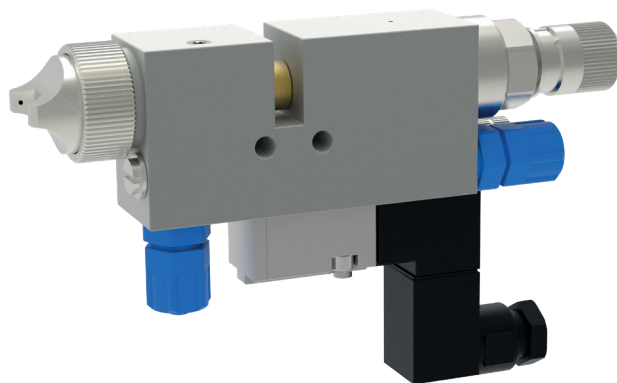


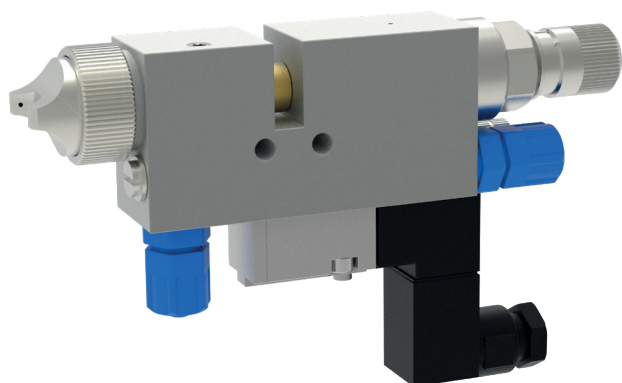
## Spray valve MKDD-IS



**schütze**  
SPRAYTECHNOLOGY



# Spray valve MKDD-IS



The spray valves of series MKDD-IS are specially designed for the application of glues and adhesives. Also other fluids as oils and release agents can be sprayed. These spray valves can be used for continuous or intermitted employments.

A special of this valve is the integrated atomizing air valve, which allows an independent regulation of purging air time (for cleaning the nozzle and needle point).

The very short air channels within the valve and the direct mounted 5/2 way solenoid valve give this valve very fast and exact needle intermission cycles. Depending on nozzle dimension, fluids of different viscosities can be applied. Also different versions of air caps allow optimal spray jets for any application.

- available nozzle dimensions:  
ø 0,2 / 0,3 / 0,5 / 0,8 / 1,0 / 1,2 / 1,5 / 2,0 / 2,5 mm
- with ratchet regulator for easy adjusting amount of fluid.
- solenoid valves in different tensions  
(24 V/DC / 110 V/AC / 230 V/AC)
- different nozzles and needles for individual application requirements
- optional with proximity switch

## Technical data:

<b>Material pressure:</b>	max. 35 bar
<b>Control air pressure:</b>	min. 5 - 6 bar
<b>Cycles:</b>	up to 30 cycles per second
<b>Measurements:</b>	132 x 81 x 22 mm (incl. solenoid valve)
<b>Gun body:</b>	stainless steel
<b>Nozzle + needle:</b>	stainless steel
<b>gaskets:</b>	Viton® (other materials on request)

Special designs on request.  
Technical alterations reserved.  
For further information please contact us.