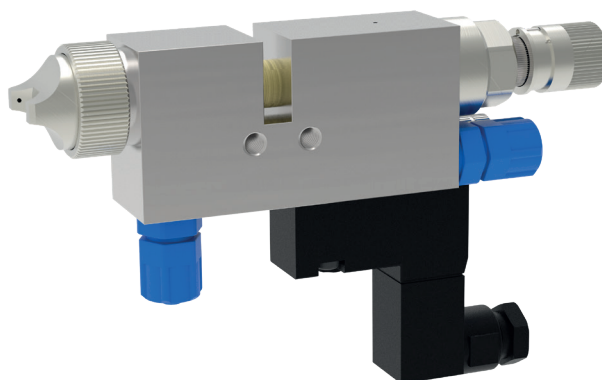


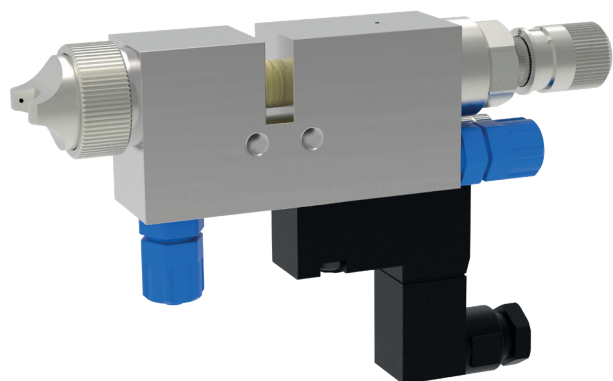
Spray valve MKDD-S



schütze
SPRAYTECHNOLOGY



Spray valve MKDD-S



The spray valves of series MKDD - S are specially designed for the application of glues and adhesives. Also other fluids as oils and release agents can be sprayed. They can be used for continuous or intermitted employments. Via the direct mounted 3/2 way solenoid valve the control air is operated. Short air channels within the MKDD valve body give it very fast and exact needle intermission cycles. The atomizing air is operated by an external valve. The fastening of this valve to a machine can be done via the two bores (thread M5). Optional clamps are available. Different versions of air caps allow an optimal spray jet for each application.

- available nozzle dimensions:
ø 0.2 / 0.3 / 0.5 / 0.8 / 1.0 / 1.2 / 1.5 / 2.0 / 2.5 mm
- ratchet regulator for easy adjusting amount of fluid
- solenoid valves in different tensions
(24V/DC / 110V/AC / 220V/AC)
- different nozzles and air caps for individual application requirements

Technical data:

Material pressure:	max. 35 bar
Control air pressure:	min. 5 - 6 bar
Cycles:	up to 30 cycles per second
Measurements:	132 x 81 x 22 mm (incl. solenoid valve)
Valve body:	stainless steel
Nozzle + needle:	stainless steel
Gaskets:	Viton® (other materials on request)

Special designs on request.
Technical alterations reserved.
For further information please contact us.