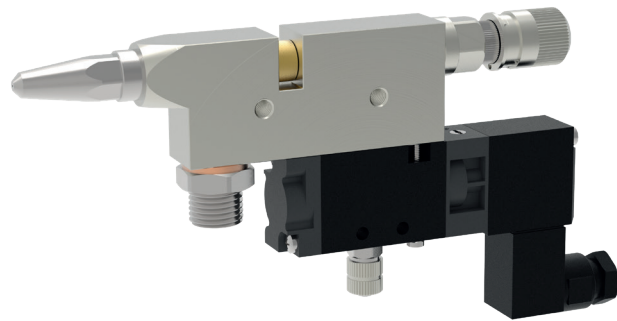


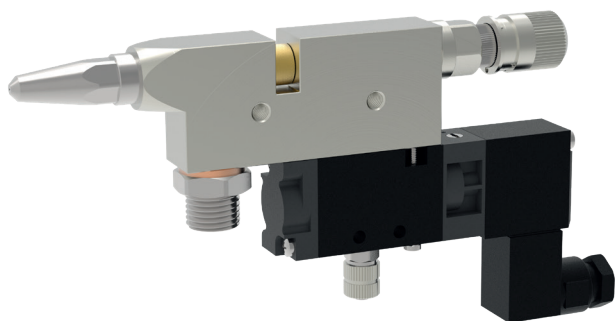
## Extrusionvalve MMKD-40 (LV/KV)



**schütze**  
SPRAYTECHNOLOGY



# Extrusionvalve MMKD-40 (LV/KV)



The extrusion valves of series MMKD-40 are very fast acting valves for continuous or intermitted use. They are suitable for the application of glues, adhesives, oils and sealing compounds.

The extreme short control air distance, reached through the directly mounted 5/2 way solenoid gives this valve very fast and exact needle intermission cycles up to 50 cycles per second.

The very small dimensions of valve gives the opportunity to install them with very low space requirements. With the long nozzles (LV) the valves can be sloped to each other such to achieve narrow nozzle distances.

The extrusion valves of series MMKD-40 are designed for material pressures up to 100 bar. The MMKD-40 can be equipped with different nozzle extensions (optional) and nozzle shutters (optional).

- available nozzle dimensions:  
ø 0.2 / 0.3 / 0.4 / 0.5 / 0.6 / 0.7 / 0.8 / 1.0 / 1.2 / 1.5 / 2.0 / 2.5 mm
- with ratchet regulator for easy adjusting amount of fluid
- regulation of fluid outlet optional with counter nut adjustment
- solenoid valves in different tensions  
(24 V/DC / 110 V/AC / 230 V/AC)

## Technical data:

<b>Material pressure:</b>	max. 100 bar
<b>Control air pressure:</b>	min. 6 bar (8 bar for material pressures higher than 50 bar)
<b>Cycles:</b>	up to 50 cycles per second
<b>Measurements:</b>	162 x 82 x 15 mm (incl. solenoid valve)
<b>Valve body:</b>	brass, chemically nickel plated
<b>Nozzle:</b>	stainless steel
<b>Needle:</b>	tungsten carbide
<b>Gaskets:</b>	Viton® (other materials on request)

Special designs on request.  
Technical alterations reserved.  
For further information please contact us.