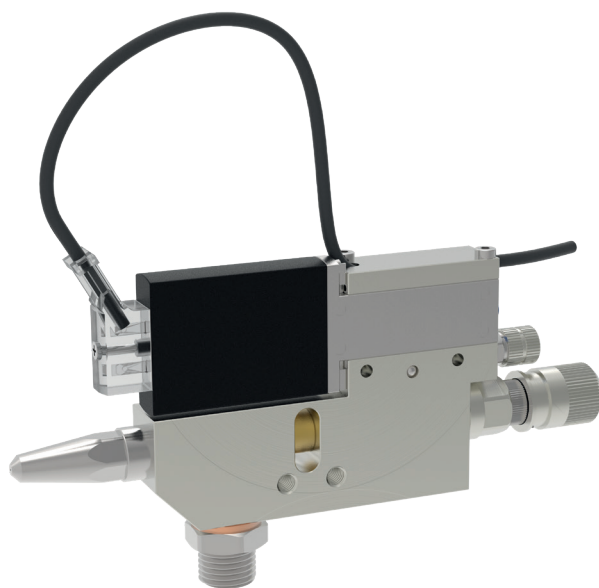


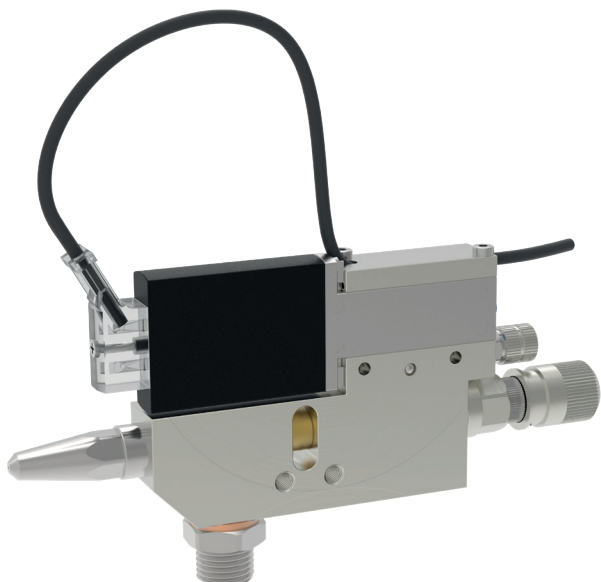
Extrusionvalve MMKD-50



schütze
SPRAYTECHNOLOGY



Extrusionvalve MMKD-50



The extrusion valves of series MMKD-50 are very fast acting valves for continuous or intermitted use. They are available with short nozzle (KV) or with long nozzle (LV).

They are suitable for the application of oils, glues, adhesives and sealing compounds. Depending on nozzle dimension, fluids of different viscosities can be applied. The very small valves dimensions gives the opportunity to install them with very low space requirements. With the long nozzles (LV) the valves can be sloped to each other such to achieve narrow nozzle distances.

The control of the valve is done by the 5/2 way solenoid, which is integrated in the valve body. The extreme short control air distances and the high speed solenoid gives this valve very fast and exact needle intermission cycles up to 200 cycles per second.

- available nozzle dimensions:
ø 0.2 / 0.3 / 0.4 / 0.5 / 0.6 / 0.7 / 0.8 / 1.0 / 1.2 / 1.5 / 2.0 mm
- with ratchet regulator for easy adjusting amount of fluid
- optional with regulation of fluid with counter nut
- optional with inductive proximity switch to scan the movements of needle

Technical data:

Material pressure:	max. 100 bar
Control air pressure:	min. 6 bar
Cycles:	up to 200 cycles per second
Measurements:	143 x 58 x 15 mm (LV-nozzle) 125 x 58 x 15 mm (KV-nozzle)
Weight:	approx. 440 g
Valve body:	brass, chemically nickel plated
Nozzle:	stainless steel
Needle:	tungsten carbide
Gaskets:	Viton® (other materials on request)

Special designs on request.
Technical alterations reserved.
For further information please contact us.