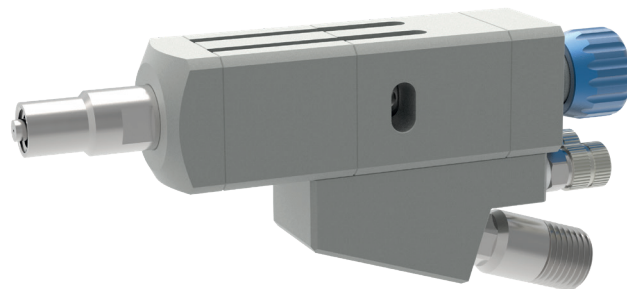
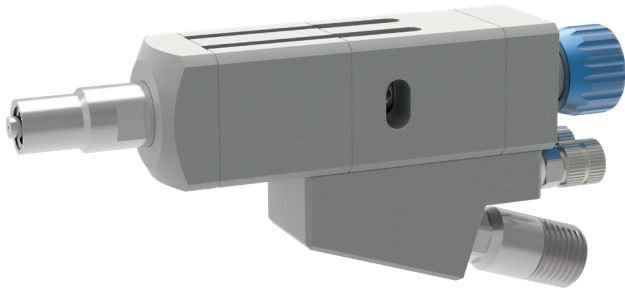


VDV-25 dispensing valve



schütze
SPRAYTECHNOLOGY





The VDV-25 dispensing valve is used for exact dispensing of low and high-viscosity media. The valve is characterised by its high level of precision and very good reproducibility of the rate of application.

Media such as greases, sealants and even oils can be dispensed with application rates of 2.5-25 mm³ or 10-100 mm³ per cycle. VDV series dispensing valves are manufactured from high-quality materials and are therefore also suitable for operation with aggressive media. Fluctuations in material pressure or cycle time do not influence the dispensing volume.

The VDV-25 dispensing valve is a full jet valve. The VDV-25 is also available as a spray valve (VDV-25 S). Additionally, it can be fitted with various different extensions.

To increase process reliability, optional function monitoring with magnetic field sensors is available.

- Also available with adapter for Luer lock dispensing needles
- Available nozzle sizes:
ø 0.2 / 0.3 / 0.5 / 0.8 / 1.0 / 1.2 / 1.5 / 2.0 mm
- Raster regulation for easy adjustment of the material flow
- Various nozzles and air caps for individual adjustment of the spray pattern (VDV-25 S version)

Technical data:

Dimensions:	approx. 113 x 25 x 58 mm
Weight:	approx. 530 g
Control air pressure:	6 - 10 bar
Atomising air pressure:	0.5 - 6 bar
Material pressure:	max. 150 bar
Dispensing capacity:	2.5 - 25 mm ³ / 10 - 100 mm ³ per cycle
Switching frequency:	max. 5 Hz
Repeat accuracy:	>97%

Special designs on request.
Technical alterations reserved.
For further information please contact us.