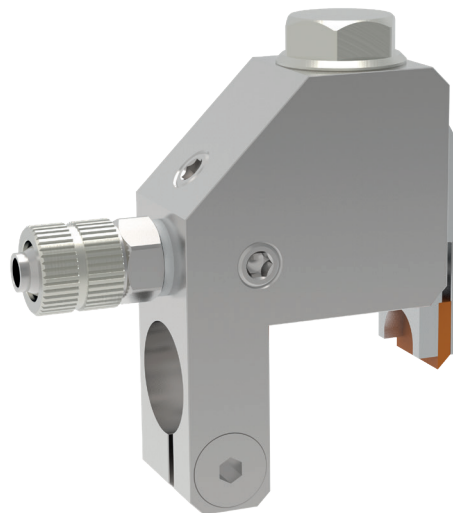
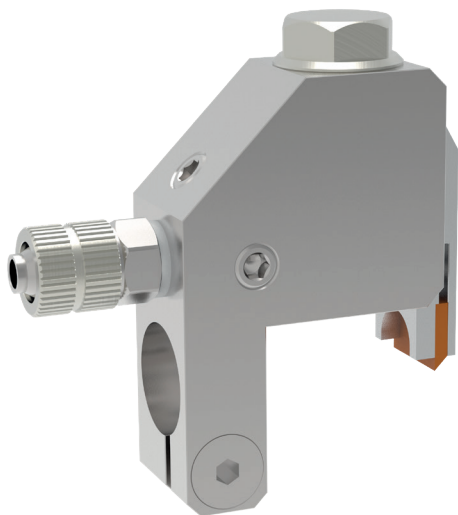


## Nozzle shutter DN 15



**schütze**  
SPRAYTECHNOLOGY





The nozzle shutter DN-15 can be used for all SCHÜTZE extrusion valves of 15mm width which are fitted with long nozzle (LV).

The nozzle shutter closes the top of LV-nozzles during longer working interruptions. In this way the rest material within the nozzle can not dry up. The shutter will be opened via pressure air. Take away the pressure air a spring will close the shutter.

Special designs on request.  
Technical alterations reserved.  
For further information please contact us.