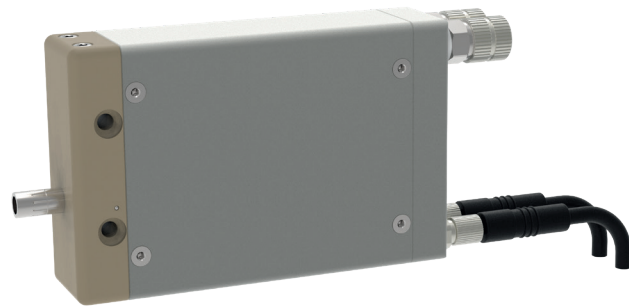
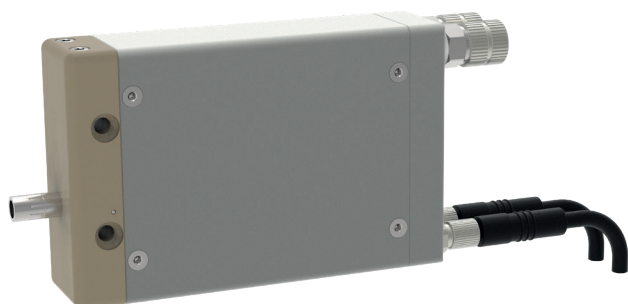


EMSV electric mini spray valve



schütze
SPRAYTECHNOLOGY





The EMSV electric spray valve is an electromagnetically controlled applicator for the processing of materials such as sealants, adhesives, greases, paints, oils and many other media. The spraying process can be carried out as either an intermittent or continuous process.

The device is controlled using the two integrated flipper solenoid valves. The spray valve is opened and the spraying process starts when the flipper solenoid valve receives a signal. When there is no longer a signal, spring force closes the spray valve, thus interrupting the spraying of material and expulsion of atomising air.

The function is: to open in response to electromagnetism and to close in response to spring pressure

- Available nozzle sizes:
 - ø 0.3 mm
- Light-weight and compact design
- PEEK main valve body
- Also available as full jet valve (EMVV)
- optional all materialwetted parts made from PEEK (i.e. for application of anaerobic adhesive)

Technical data:

Dimensions:	86.5 x 50 x 20 mm
Weight:	approx. 210 g
Power supply:	24 V
Atomising air pressure:	max. 6 bar
Material pressure:	max. 3 bar

Special designs on request.
Technical alterations reserved.
For further information please contact us.