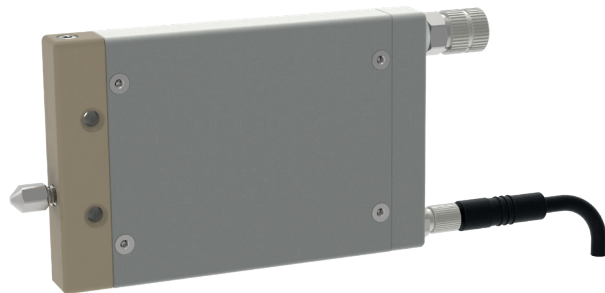
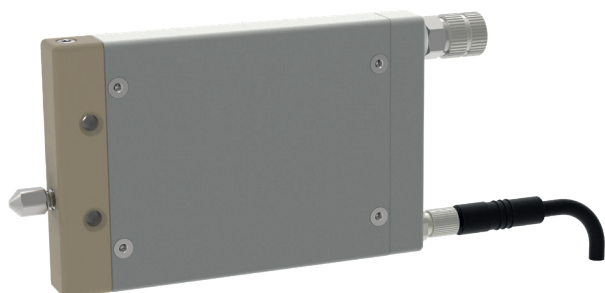


EMVV electrical mini full jet valve



schütze
SPRAYTECHNOLOGY





The EMVV electrical full jet valve is an electronically controlled applicator for the processing of materials such as sealants, adhesives, greases, paints, oils and many other media. The spraying process can be carried out as either an intermittent or continuous process.

The device is controlled using the integrated flipper solenoid valve. The full jet valve is opened and the spraying process starts when the flipper solenoid valve receives a signal. When there is no longer a signal, spring force closes the full jet valve, thus interrupting the spraying of material.

The function of the valve is:
to open in response to electromagnetism and to close in response to spring pressure.

- Available nozzle sizes:
ø 0.2 / 0.3 / 0.4 / 0.5 / 0.8 mm
- Light-weight and compact design
- PEEK main valve body
- Also available as spray valve (EMSV)
- optional all materialwetted parts made from PEEK
(i.e. for application of anaerobic adhesive)

Technical data:

Dimensions:	86.5 x 50 x 10 mm
Weight:	approx 75 g
Voltage:	24 V
Switching frequency:	max. 80 Hz
Material pressure:	max. 7 bar

Special designs on request.
Technical alterations reserved.
For further information please contact us.