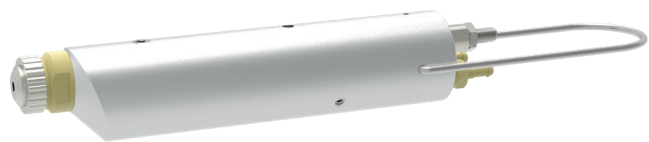


## SSV spray valve



**schütze**  
SPRAYTECHNOLOGY



SSV 24



SSV 20



SSV 24



SSV 20

The SSV spray valve is a spray valve developed for spray application of low-viscosity media.

The valve is controlled by actuating the trigger or, on versions with control air connection, using an external switching valve (not included with delivery). The spray valves require an additional valve for controlling the atomising air (not included with delivery).

A full jet version is also available (SDV).

The spray version is available in two different sizes: SSV 20 and SSV 24.

The function of the needle is: to open the trigger with air pressure or manual actuation/close it with spring pressure.

- Available nozzle sizes:  
ø 0.2 / 0.3 / 0.5 / 0.8 / 1.0 / 1.2 / 1.5 / 2.0 mm
- Includes hanging bracket for hanging up the dispensing valve
- Various nozzles and air caps for individual adjustment of the spray pattern

## Technical data:

Model	Dimensions	Weight	Material pressure	Control air pressure	Atomising air pressure
<b>SSV 24:</b>	approx. 130 x 32 x 24 mm	145 g	0,5 – 20 bar	3 – 6 bar	0,5 – 6 bar
<b>SSV 20:</b>	approx. 128 x 32 x 20 mm	120 g	0,5 – 15 bar	3 – 6 bar	0,5 – 6 bar

Special designs on request.  
Technical alterations reserved.  
For further information please contact us.