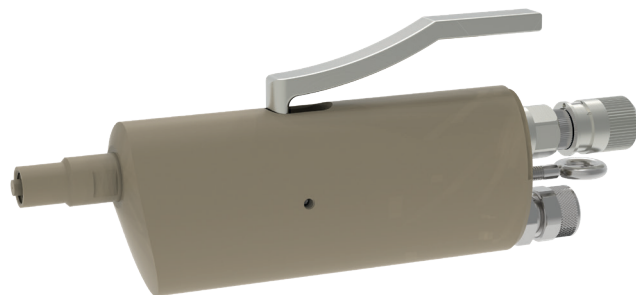


**KVV**  
**manual full jet valve**



**schütze**  
SPRAYTECHNOLOGY





The KVV full jet valve is a manually controlled applicator for dispensing sprayable materials, e.g. adhesives, greases or paints.

The device is controlled by actuating the trigger. The function of the needle is: to open in response to manual actuation / to close in response to spring pressure.

The KVV is also available as a spray valve (KSV).

- Compatible with Luer lock adapters
- Different nozzles possible (LV, KV or VD)
- Parts which come into contact with material made from PEEK on request (e.g. for anaerobic adhesives)
- Includes eyebolt for hanging up the valve

#### Technical data:

**Dimensions:** 170 x 28 x 65 mm

**Weight:** 230 g

**Atomising air pressure:** 0.5 - 6 bar

**Material pressure:** max. 15 bar

Special designs on request.  
Technical alterations reserved.  
For further information please contact us.