

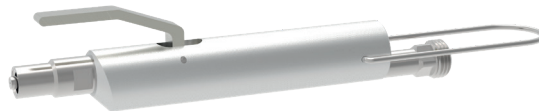
## SDV pin dispensing valve



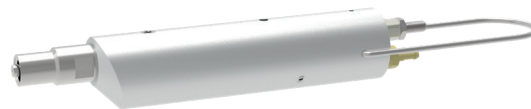
**schütze**  
SPRAYTECHNOLOGY



SDV 15



SDV 20

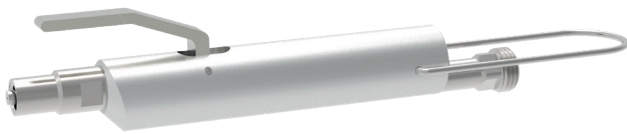


SDV 24

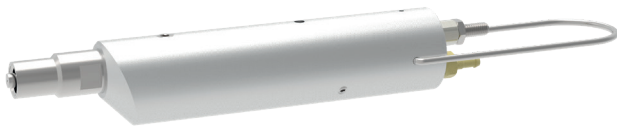
# SDV pin dispensing valve



SDV 15



SDV 20



SDV 24

The SDV pin dispensing valve is a full jet valve developed for applying viscous media, such as adhesives, greases, pastes etc.

The valve is controlled by actuating the trigger or, on versions with control air connection, using an external switching valve (not included with delivery).

The full jet version is available in three different sizes: SDV 15, SDV 20 and SDV 24.

A spray version is also available (SSV).

The function of the needle is: to open the trigger with air pressure or manual actuation/close it with spring pressure.

- Full jet version compatible with Luer lock adapters
- Available nozzle sizes:  
ø 0.2 / 0.3 / 0.5 / 0.8 / 1.0 / 1.2 / 1.5 / 2.0 mm
- Includes hanging bracket for hanging up the dispensing valve

## Technical data:

Model	Dimensions	Weight	Material pressure	Control air pressure
<b>SDV 24:</b>	approx. 140 x 29 x 24 mm	143 g	0,5 – 4,0 bar	3 – 6 bar
<b>SDV 20:</b>	approx. 150 x 33 x 20 mm	128 g	0,5 – 20 bar	3 – 6 bar
<b>SDV 15:</b>	approx. 130 x 26 x 15 mm	72 g	0,5 – 20 bar	3 – 6 bar

Special designs on request.  
Technical alterations reserved.  
For further information please contact us.